

## Honours and Awards

- Special "Comparte" Programme Prize for the Search for Efficiency for the Sustainability of Healthcare Organisations and Services. awarded by the Spanish Family and Community Medicine Society and the Spanish General Medicine Society.
- First prize in the 16th National Accident and Emergency Nursing Conference.
- Prize for best nursing communication in the 31st Spanish Arthroscopy Association Conference.
- Prize in the 29th National Nursing Seminars on Trauma and Orthopaedic Surgery.
- Spanish Laboratory Management Society (SEDIGLAC) Prize.
- Family-Responsible Company Certificate awarded by the Masfamilia Foundation.

## Training, teaching and research

Courses taught	42
No. training hours	2,805
Attendance on courses, seminars and conferences	109
Scientific publications	9
Awards	6
Online courses	11



Albaida del Aljarafe  
Almensilla  
Aznalcázar  
Aznalcóllar  
Benacazón  
Bollullos de la Mitación  
Bormujos  
Castilleja de Guzmán  
Castilleja de la Cuesta  
Castilleja del Campo  
Carrión de los Céspedes  
Chucena  
Espartinas  
Gines  
Hinojos  
Huévar del Aljarafe  
Mairena del Aljarafe  
Olivares  
Palomares del Río  
Pilas  
San Juan de Aznalfarache  
Sanlúcar la Mayor  
Salteras  
Tomares  
Umbrete  
Valencina de la Concepción  
Villanueva del Ariscal  
Villamanrique de la Condesa



Avda. San Juan de Dios s/n. C.P. 41930, Bormujos



## 2013 annual report HOSPITAL SAN JUAN DE DIOS DEL ALJARAFE

Ten years taking care of your health



## Introduction

The San Juan de Dios del Aljarafe Hospital has just celebrated its tenth anniversary. It has been a period in which the Aljarafe Public Health Consortium has consolidated itself in the area and the healthcare services provided to the target population have continuously grown and improved.

The Hospital started its activity in 2003 to meet the needs of more than 284,000 citizens in 28 municipalities in the comarca of Aljarafe. The aim of this ambitious project has been to become a close, innovative, cutting-edge, committed hospital where professionals work with a respect for dignity and with the person under our care the central focus. Local residents have endorsed this notion by giving our centre maximum points in the Andalusian Public Health System User Satisfaction Survey.

It has been ten years of evolution, of commitment to meeting the public's expectations, of enthusiasm to do things right, to gain knowledge and innovate.

During this period quality has been, and continues to be, the framework for our operations. We obtained advanced accreditation from the Andalusian Quality Agency, the Avedis Donabedian prizes for excellence in integration for the Integrated Care "Comparte" Programme, the European Certificate for the Integration of People with Disabilities, the special prize for the search for Efficiency for the Sustainability of Healthcare Organisations and Services (of the Spanish Family and Community Medicine Society and the General Medicine Society), the Spanish Laboratory Management Society prize and the Family-Responsible Company Certificate, among other prizes and acknowledgements.

Innovation in healthcare practices and efficiency are outstanding features of the San Juan de Dios del Aljarafe Hospital and they will continue to be a quality in the future, projecting us as a networking centre for the imaging and diagnostic areas.

## Facilities

Hospital beds	192	Treatment/Examination rooms	23
ICU beds	8	Emergency/Observation beds	16
Operating rooms	8	Paediatric Observation beds	7
Minor Surgery rooms	2	Quick Treatment Stations	16
Consultation rooms	48		



Most frequent processes

Description	AS	RW
Major joint replacement except hip and lower limb replantation, except due to CC	3.45	2.7777
Heart failure and shock	6.51	1.3004
Laparoscopic cholecystectomy without exploration. Biliary tract without CC	2.23	1.0934
Simple pneumonia and other respiratory disorders except bronchitis and asthma with major CC	8.27	2.2282
Hip replacement except due to complications	4.75	3.1545
Lower limb and humerus procedure except hip, foot and femur. Age > 17 without CC	3.31	1.4086
Stroke with heart attack	6.38	1.6748
Transurethral procedures without CC	1.24	0.8598
Shoulder, elbow or forearm procedure, except major joint procedure without CC.	1.77	1.018
Laparoscopic appendectomy	3.23	1.0529
Hip and femur procedure except major joint, age > 17 without CC	5.46	2.084
Anus and enterostomy procedures without CC	1.88	0.7492
Disorders of the biliary tract without CC	5.81	0.7206
Disorders of the biliary tract with CC	7.36	1.1837
Uterus and appendages procedure by CA in situ and non-malignancy process without CC	1.73	1.0138
Pulmonary oedema and respiratory failure	7.3	1.416
Hernia procedures except inguinal and femoral age > 17 without CC	2.12	1.0018
Circulatory disorders with AMI without major complications discharged alive	6.88	1.6352
Pancreatic disorders except malignant neoplasm	6.6	0.9177
Congestive heart failure and cardiac arrhythmia with major CC	7.52	3.3009
Chronic obstructive pulmonary disease	6.25	1.0606
Simple pneumonia and pleurisy age > 17 with CC	6.16	1.1855
Circulatory disorders with AMI and major complications, discharged alive	8.91	2.7212
Knee procedures without CC	1.79	1.1959
Hepatobiliary and pancreatic disorders with major CC	9.2	3.8563
Major male pelvis procedures without CC	2.38	1.8917
Transient ischemic attack	4.62	0.8166
Renal failure	7.47	1.329
Septicaemia with major CC	11.9	4.1633
Inguinal and femoral hernia procedures age > 17 without CC	1.51	0.8245

Source: CMBD. Clinical Documentation Unit. - S.A.U.  
AS: Average stays (gross). RW: Average relative weights.

Financial information

Investments, income and expenses undertaken in 2013 (expressed in €).

Investments	Amount
Computer applications and equipment	77,064
Technical facilities	52,853
Other facilities	22,329
Machinery	277,528
Furniture and fittings	2,637
TOTAL	432,412

Revenue	Amount
Income from subsidies	55,129,859
Other operating income	806,234
Financial revenue	4.976
TOTAL	55,941,069

Expenses	Amount
Supplies	15,862,201
Staff costs	32,147,295
Other operating costs	4,897,306
Depreciation of fixed assets	2,538,473
Financial expenses	544,981
TOTAL	55,990,256



Portfolio of Services

MEDICAL AREA

Critical Care and Emergency:

- Intensive Care Unit
- Accident and Emergency
- Paediatrics

Medicine:

- Digestive
- Cardiology
- General Medicine
- Pulmonology

SURGICAL AREA

- Anaesthesia and Resuscitation
- General and Gastroenterological Surgery
- Gynaecology
- Ophthalmology
- ENT
- Trauma and Orthopaedic Surgery
- Urology

DIAGNOSTIC AREA

Laboratory:

- Anatomical Pathology
- Biochemistry
- Haematology
- Microbiology

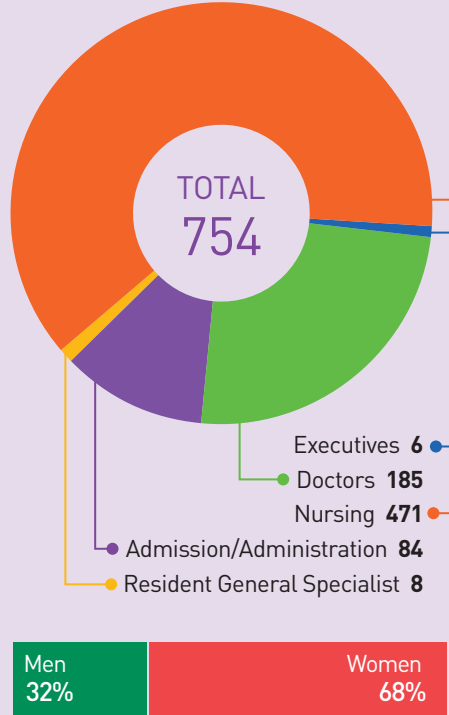
Radiology

OTHER AREAS

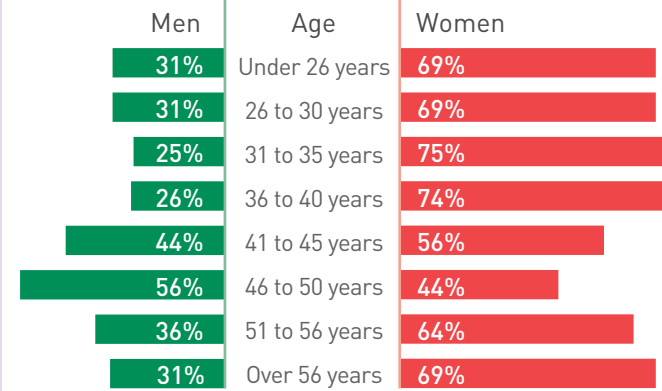
- Customer Care and Quality
- Pharmacy
- Prevention and Environment
- Rehabilitation and Musculoskeletal System



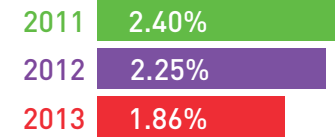
Human Resources



Distribution of HR by age and sex



Absenteeism rate



Healthcare activity

Población de referencia: 284,020 Source: Instituto Español de Estadística (Spanish Institute of Statistics)

HOSPITALISATION AREA

Emergency admissions	5,716
Planned admissions	3,204
Total admissions	8,920
Stays	46,549
Average length of stay	5.2
Occupancy rate	87.3%
Accident and Emergency pressure	64.08
Admissions/day	25.4

ACCIDENT AND EMERGENCY AREA

Emergencies dealt with	95,550
Emergencies without admission	89,834
Percentage of emergencies without admission	94.01%
Average no. of emergencies per day	262

Fuente: Cuadro de Mandos

SURGICAL AREA

Planned operations	2,545
Emergency operations	1,427
Major outpatient surgery	6,613
Minor surgery	2,406
Operations total	12,991
Operating room occupancy rate	79.31%
Day Hospital resolution rate	80.4%
Postponed operations rate	2.3%

OUTPATIENT CONSULTATION AREA

TOTAL NO. OF CONSULTATIONS	178,716
Initial Consultations	100,359
Successive Consultations	78,357
Initial Primary Care Consultations	50,442
Initial/Successive Ratio	1.28
Consultations/day	718
Average delay before initial consultations	37



Scheduled activity

Spinal Cord Injury Unit

Revenue	93
Stays	6,537
Discharges	97
Average length of stay	70.3
Physiotherapy sessions	7,127